

# massimo copenhagen



PRICE LIST - EUR Excl. VAT  
JULY 2024

## EARTH BAMBOO

HANDWOVEN

50% NEW ZEALAND WOOL / 50% BAMBOO

Pile height: 11-12 mm  
Weight: 4,00 kg/m2

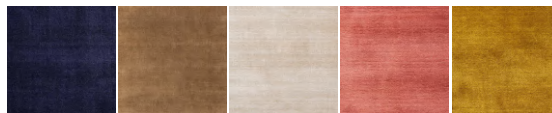
Earth Bamboo combines the softest, most lustrous surface with robustness and durability, making sure that the carpet works perfectly in almost any interior. massimo achieves this by blending soft bamboo fibre with New Zealand wool of the highest quality.

By mixing equal parts wool and bamboo fibres, we are able to create a finished rug with an exceptional level of sturdiness, protecting the rug against wear and tear and pressure marks, without sacrificing on the luxurious look and feel.

Available In:



NOUGAT ROSE CASHMERE SOFT GREY CONCRETE WARM GREY



VIBRANT BLUE CAMEL DESERT SAND TERRA COTTA MUSTARD YELLOW

	140x200 cm 4,59x6,56 ft	170x240 cm 5,58x7,87 ft	200x300 cm 6,56x9,84 ft	250x300 cm 8,20x9,84 ft	300x400 cm 9,84x13,12 ft	-	-	-	Special sizes/m2 10,76 ft2
NOUGAT ROSE	753	1,097	1,613	2,016	3,226	-	-	-	336
CASHMERE	753	1,097	1,613	2,016	3,226	-	-	-	336
SOFT GREY	753	1,097	1,613	2,016	3,226	-	-	-	336
CONCRETE	753	1,097	1,613	2,016	3,226	-	-	-	336
WARM GREY	941	1,097	1,613	2,016	4,032	-	-	-	336
MUSTARD YELLOW	941	1,097	1,613	2,520	4,032	-	-	-	336
VIBRANT BLUE	753	1,097	1,613	2,520	4,032	-	-	-	336
CAMEL	941	1,097	1,613	2,016	4,032	-	-	-	336
DESERT SAND	941	1,097	1,613	2,016	4,032	-	-	-	336
TERRA COTTA	941	1,097	1,613	2,520	4,032	-	-	-	336

All rugs are handmade - size deviation on +/- 3% must be accepted.		Prices marked with grey = special sizes with 16-18 week delivery time	
Certifications:	Colorfastness to light: ISO 105-B02-grade 5	Flammability: 16CFR 1630 (FF-1-70)	Production: SA 8000

## EARTH NATURAL

HANDWOVEN

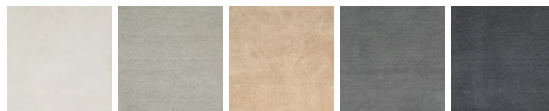
100% UNDYED NATURAL NEW ZEALAND WOOL

Pile height: 11-12 mm  
Weight: 4.0 kg/m<sup>2</sup>

The latest eco-conscious rugs collection is a celebration of natural properties of wool that takes us back to basics and teaches us to appreciate the beauty of nature. The beauty of this simple yet very contemporary collection is that it can work with any style and space. Minimalism, with a comfortable, warm and welcoming feeling.

Wool has thermo-regulating properties, is easy to care for, and can be repaired and enjoyed for years and years. Naturally stain-resistant, durable, and fire retardant, it can bring a touch of luxury and warmth to your interior.

Available In:



IVORY SILVER GREY LIGHT BEIGE LIGHT GREY DARK GREY

	-	170x240 cm 5,58x7,87 ft	200x300 cm 6,56x9,84 ft	250x350 cm 8,20x11,48 ft	300x400 cm 9,84x13,12 ft	dia 300 cm 9,84x13,12 ft	-	-	Special sizes/m <sup>2</sup> 10,76 ft <sup>2</sup>
IVORY	-	887	1,317	1,922	2,634	1,976	-	-	285
SILVER GREY	-	887	1,317	1,922	2,634	1,976	-	-	285
LIGHT BEIGE	-	887	1,317	1,922	2,634	1,976	-	-	285
LIGHT GREY	-	887	1,317	1,922	2,634	1,976	-	-	285
DARK GREY	-	887	1,317	1,922	2,634	1,976	-	-	285

## EARTH

HANDWOVEN

100% NEW ZEALAND WOOL

Pile height: 11-12 mm  
Weight: 4.0 kg/m<sup>2</sup>

Earth rugs are made of the best quality New Zealand wool, which adds natural beauty and ensures easy maintenance. The natural properties of New Zealand wool makes it non-allergenic and fire-resistant, which helps to create a safe and healthy indoor environment, and also it has a natural ability to resist dirt.

Available In:



VERTE GREY MOSS GREEN BLUSH SEAGREEN CHARCOAL

	140x200 cm 4,59x6,56 ft	170x240 cm 5,58x7,87 ft	200x300 cm 6,56x9,84 ft	250x300 cm 8,20x9,84 ft	250x350 cm 8,20x11,48 ft	300x400 cm 9,84x13,12 ft	-	-	Special sizes/m <sup>2</sup> 10,76 ft <sup>2</sup>
VERTE GREY	618	887	1,317	2,137	2,493	2,634	-	-	285
MOSS GREEN	618	887	1,317	1,647	2,493	2,634	-	-	285
BLUSH	618	887	1,317	1,647	2,493	3,419	-	-	285
SEA GREEN	798	887	1,317	2,137	2,493	3,419	-	-	285
CHARCOAL	798	887	1,710	2,137	2,493	3,419	-	-	285

All rugs are handmade - size deviation on +/- 3% must be accepted.				Prices marked with grey = special sizes with 16-18 week delivery time			
Certifications:	Colorfastness to light: ISO 105-B02-grade 5		Flammability: 16CFR 1630 (FF-1-70)		Production: SA 8000		

## LORO

HANDKNOTTED

ALPACA WOOL / BAMBOO

Pile height: 9-11 mm  
Weight: 5,00 kg/m<sup>2</sup>

The Loro rug is handknotted from finest Alpaca Wool, mixed with a little touch of bamboo fibres, which together give a durable rug with a light shine. Alpaca wool is a natural animal fibre that is fully biodegradable, soft, strong and warm. Alpaca fibres are considered extremely water resistant, while staying highly breathable. They have a higher tensile strength, meaning they can stand up to more pressure or tension before breaking. Bamboo fibres are made of bamboo pulp and have strong durability, stability and tenacity. The production of Bamboo is sustainable as it thrives without any pesticides and also it is biodegradable and thus a very eco-friendly material.

Available In:



CREAM

	-	170x240 cm 5,58x7,87 ft	200x300 cm 6,56x9,84 ft	250x350 cm 8,20x11.48 ft	-	-	-	-	Special sizes/m <sup>2</sup> 10,76 ft <sup>2</sup>
CREAM	-	2,634	3,881	5,666	-	-	-	-	815

## MONTE

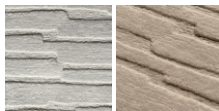
HANDKNOTTED

100% MERINO WOOL

Pile height: Low Cut 5 mm | High Cut 8-9 mm  
Weight: 4,70 kg/m<sup>2</sup>

The Monte rug is made of high-quality Merino Wool fibres, which give a luxurious and durable rug. Different pile heights in unique geometric shapes create an elegant pattern with a luxuriously deep and sumptuous texture. Merino sheep grow the most opulent and soft fleece, that is famed for its fineness and delightful touch. The softness that Merino wool brings to carpet in no way diminishes performance. As in all wool, Merino wool is natural, sustainable, renewable and biodegradable. Merino wool carpet is naturally stain, soil and crush resistant.

Available In:



CREAM

NATURAL

	-	170x240 cm 5,58x7,87 ft	200x300 cm 6,56x9,84 ft	250x350 cm 8,20x11.48 ft	-	-	-	-	Special sizes/m <sup>2</sup> 10,76 ft <sup>2</sup>
CREAM	-	2,634	3,881	5,666	-	-	-	-	815
NATURAL	-	2,634	3,881	5,666	-	-	-	-	815

All rugs are handmade - size deviation on +/- 3% must be accepted.				Prices marked with grey = special sizes with 16-18 week delivery time			
Certifications:	Colorfastness to light: ISO 105-B02-grade 5	Flammability: 16CFR 1630 (FF-1-70)	Production: SA 8000				
	*STANDARD 100 by OEKO-TEX®	* Applies to Monte Collection only					

## BAMBOO

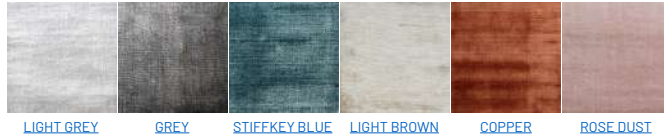
**HANDWOVEN**

**100% BAMBOO**

Pile height: 10-11 mm  
Weight: 4,00 kg/m<sup>2</sup>

Massimo's BAMBOO rugs are made of 100% bamboo fibres, which gives a luxurious feeling due to the unique softness and shiny surface. Bamboo fibres are made of bamboo pulp and have strong stability and tenacity. The quality of the fibres minimizes peeling to almost nothing. The production of Bamboo is sustainable as it thrives without any pesticides and also it is biodegradable and thus a very eco-friendly material. Ideal choice for bedrooms and living rooms, adding a soft and luminous texture.

Available In:



	140x200 cm 4,59x6,56 ft	170x240 cm 5,58x7,87 ft	200x300 cm 6,56x9,84 ft	250x300 cm 8,20x9,84 ft	300x400 cm 9,84x13,12 ft	dia 240 cm 7,87 ft	-	-	Special sizes/m <sup>2</sup> 10,76 ft <sup>2</sup>
LIGHT GREY	1,016	1,140	1,677	2,097	4,355	2,090	-	-	363
GREY	1,016	1,140	1,677	2,097	3,355	2,090	-	-	363
STIFFKEY BLUE	1,016	1,140	1,677	2,097	4,355	2,090	-	-	363
LIGHT BROWN	780	1,140	1,677	2,097	4,355	2,090	-	-	363
COPPER	1,016	1,140	1,677	2,097	4,355	2,090	-	-	363
ROSE DUST	1,016	1,140	1,677	2,722	4,355	2,090	-	-	363

## KARMA

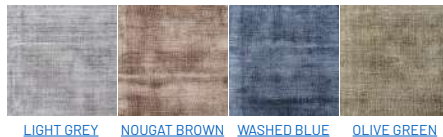
**HANDWOVEN**

**100% RECYCLED BAMBOO**

Pile height: 5-7 mm  
Weight: 4,00 kg/m<sup>2</sup>

The Karma rug is made of recycled bamboo fibers, which give a durable rug with a light shine that is easy to maintain. Bamboo fibers are made of bamboo pulp and have strong durability, stability and tenacity. The quality of the fibers minimizes peeling to almost nothing. The production of Bamboo is sustainable as it thrives without any pesticides and also it is biodegradable and thus a very eco-friendly material.

Available In:



	-	160x230 cm 5,25x7,55 ft	200x300 cm 6,56x9,84 ft	250x350 cm 8,20x11,48 ft	dia 300 cm 9,84 ft	-	-	-	Special sizes/m <sup>2</sup> 10,76 ft <sup>2</sup>
LIGHT GREY	-	623	1,010	1,459	1,505	-	-	-	226
NOUGAT BROWN	-	623	1,010	1,459	1,505	-	-	-	226
WASHED BLUE	-	623	1,010	1,459	2,032	-	-	-	226
OLIVE GREEN	-	623	1,010	1,459	2,032	-	-	-	226

All rugs are handmade - size deviation on +/- 3% must be accepted.				Prices marked with grey = special sizes with 16-18 week delivery time			
Certifications:	Colorfastness to light: ISO 105-B02-grade 5	Flammability: 16CFR 1630 (FF-1-70)	Production: SA 8000				

## REPEAT

HANDTUFTED

RECYCLED PET

Pile height: 15-18 mm  
Weight: 4,50 kg/m<sup>2</sup>

ReRepeat collection represents an innovative and sustainable take on textiles. Handtufted from recycled plastic (rPET), with an additional OEKO-TEX cotton layer on the backside, making it suitable for any type of floor.

A lightweight fibre obtained from the material produced through the process of recovery and reuse of PET, presents a high resistance to wear and tear, and offers good thermal properties, which makes it a perfect choice for textiles at home and commercial settings. The composition makes the ReRepeat rugs both earth-friendly and easy to care for. The fibre resists stains, mold, mildew and moisture. You can clean them simply by using a garden hose or spot clean with a damp sponge.

Available in:



	-	160x230 cm 5,58x7,87 ft	200x300 cm 6,56x9,84 ft	250x350 cm 8,20x11,48 ft	dia 300 cm 9,84 ft	-	-	-	Special sizes/m <sup>2</sup> 10,76 ft <sup>2</sup>
GRAPHITE	-	623	1,010	1,459	1,505	-	-	-	226
CREAM	-	623	1,010	1,459	1,505	-	-	-	226
BEIGE	-	623	1,010	1,459	1,505	-	-	-	226
PISTACHIO	-	623	1,010	1,459	1,505	-	-	-	226
PASTEL YELLOW	-	623	1,010	1,459	1,505	-	-	-	226

## CLOUD9 by FACNE

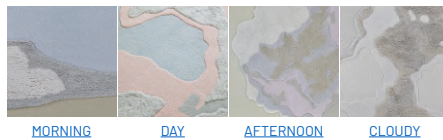
HANDWOVEN & HANDTUFTED

100% NEW ZEALAND WOOL

Pile height: 5-30 mm  
Weight: 4,00 kg/m<sup>2</sup>

The new series of vibrant rugs, by FACNE Studio for massimo, capture playfulness in the form of contemporary artworks. Drawing inspiration from the temperaments of the sky, CLOUD9 series are handwoven and handtufted with different weaving techniques from 100% New Zealand Wool. A poetic snapshot of clouds seamlessly created from different pile heights and a boucle weaving technique.

Available In:



	140x200 cm 4,59x6,56 ft	170x240 cm 5,58x7,87 ft	200x300 cm 6,56x9,84 ft	250x350 cm 8,20x11,48 ft	300x400 cm 9,84x13,12 ft	-	-	-	Special sizes/m <sup>2</sup> 10,76 ft <sup>2</sup>
MORNING	753	1,371	1,613	2,940	4,032	-	-	-	336
DAY	753	1,371	1,613	2,940	4,032	-	-	-	336
AFTERNOON	753	1,371	1,613	2,940	4,032	-	-	-	336
CLOUDY	753	1,371	1,613	2,940	4,032	-	-	-	336



Facne Design Studio was founded by Mathilde Witt Møhlholm and Kamilla Schultz. Their primary field of experience is interior design, graphic design, furniture design, exhibition design, concept development and trend forecasting. Their way of working revolves around user needs. For each project they carefully uncover unknown needs and dive into their own in-depth knowledge of materials. Honing in on the unredeemed potential of each project they always end up transforming ambitious ideas into inspiring and beautiful designs.

All rugs are handmade - size deviation on +/- 3% must be accepted.		Prices marked with grey = special sizes with 16-18 week delivery time	
Certifications:	Colorfastness to light: ISO 105-B02-grade 5	Flammability: 16CFR 1630 (FF-1-70)	Production: SA 8000
	*STANDARD 100 by OEKO-TEX®	*Applies to Repeat Collection only	

## STARDUST

HANDKNOTTED

50% NEW ZEALAND WOOL / 50% BAMBOO

Pile height: 10-11 mm  
Weight: 4,0 kg/m<sup>2</sup>

Stardust rug is made of best quality New Zealand wool mixed with Bamboo fibers. The combination of New Zealand wool and Bamboo gives a very durable rug with a light shine which is easy to maintain. The quality of the fibres minimizes peeling to almost nothing.

Available in:



BLUE

	-	170x240 cm 5,58x7,87 ft	200x300 cm 6,56x9,84 ft	-	-	-	-	-	Special sizes/m <sup>2</sup> 10,76 ft <sup>2</sup>
BLUE	-	2,483	3,655	-	-	-	-	-	763

## MOON NIGHT / COPPER MOON / SPACE SURFACE / OCEAN

HANDKNOTTED

Pile height: 10-11 mm  
Weight: 4,00 kg/m<sup>2</sup>

High quality, handknotted rugs made of 100% bamboo fibres, which give a luxurious feeling due to the unique softness and shiny surface. Bamboo fibres are made of bamboo pulp and have strong durability, stability and tenacity. The quality of the fibres minimizes peeling to almost nothing.

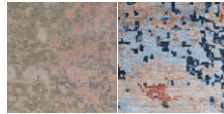
Available In:



MOON NIGHT

COPPER MOON

100% BAMBOO



SPACE SURFACE

OCEAN

50% NEW ZEALAND WOOL / 50% BAMBOO

	-	170x240 cm 5,58x7,87 ft	200x300 cm 6,56x9,84 ft	dia 200 cm 6,56 ft	dia 240 cm 7,87 ft	-	-	-	Special sizes/m <sup>2</sup> 10,76 ft <sup>2</sup>
MOON NIGHT	-	2,483	3,655	2,483	3,655	-	-	-	763
COPPER MOON	-	3,115	3,655	2,483	3,655	-	-	-	763
SPACE SURFACE	-	2,483	3,655	2,483	3,655	-	-	-	763
OCEAN	-	3,115	4,581	2,483	4,581	-	-	-	763

All rugs are handmade - size deviation on +/- 3% must be accepted.				Prices marked with grey = special sizes with 16-18 week delivery time			
Certifications:	Colorfastness to light: ISO 105-B02-grade 5	Flammability: 16CFR 1630 (FF-1-70)	Production: SA 8000				

## ESCAPE by Space Copenhagen

HANDWOVEN

100% UNDYED NATURAL NEW ZEALAND WOOL

Pile height: N/A  
Weight: 2,00 kg/m<sup>2</sup>

Kelim rugs by Space Copenhagen for massimo focus on the subdued colour tones and the natural feel. The designer's wish has been to design a modern collection of minimal, yet tactile and crafted rugs with subtle details – to support and enhance the warmth, softness, human layer and ambience in a modern space.

Available In:



CHALK CHALK WITH FRINGES MUSCAT MUSCAT WITH FRINGES STONE STONE WITH STITCHES LIGHT BEIGE LIGHT BEIGE WITH STITCHES

	90x250 cm 2,11x8,20 ft	170x240 cm 5,58x7,87 ft	200x300 cm 6,56x9,84 ft	250x350 cm 8,20x11,48 ft	300x400 cm 9,84x13,12 ft	-	-	-	Special sizes/m <sup>2</sup> 10,76 ft <sup>2</sup>
CHALK	462	827	1,220	1,774	2,435	-	-	-	280
CHALK WITH FRINGES		827	1,220	1,774	2,435	-	-	-	280
MUSCAT	462	827	1,220	1,774	2,435	-	-	-	280
MUSCAT WITH FRINGES		827	1,220	1,774	2,435	-	-	-	280
STONE	462	827	1,220	1,774	2,435	-	-	-	280
STONE WITH STITCHES		827	1,220	1,774	3,355	-	-	-	280
LIGHT BEIGE	462	827	1,220	1,774	2,435	-	-	-	280
LIGHT BEIGE WITH STITCHES		1,141	1,677	2,446	3,355	-	-	-	280

Rug Underlay Included



Signe Bindslev Henriksen and Peter Bundgaard Rützou, Space Copenhagen is a design studio that works across multiple disciplines from interior design for private homes, hotels and restaurants all over the world to art installations and art direction, furniture, lighting and refined objects. The studio's intuitive approach embodies designs that are distinctively shaped by given circumstances, functional needs, and a fundamental interest in human behavior. It is a sense of and belief in a slow aesthetic that centers quality and longevity. Their work is characterized by meticulous attention to the concept and details of every project, and a steady focus on refining design ideas across disciplines to arrive at a solution which is as coherent as it is beautiful.

All rugs are handmade - size deviation on +/- 3% must be accepted.		Prices marked with grey = special sizes with 16-18 week delivery time	
Certifications:	Colorfastness to light: ISO 105-B02-grade 5	Flammability: 16CFR 1630 (FF-1-70)	Production: SA 8000
	STANDARD 100 by OEKO-TEX®		



## SURFACE by GROUNDWORK Studio

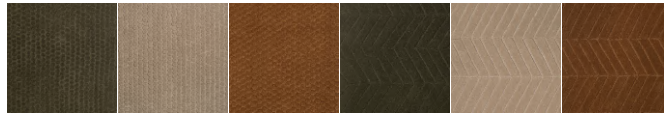
HANDTUFTED

100% NEW ZEALAND WOOL

Pile height: 12-18 mm  
Weight: 4,5 kg/m<sup>2</sup>

Delve into the quiet elegance of the everyday with the Surface Collection – a new series of hand-tufted wool rugs by Morten Bo Jensen of GROUNDWORK Studio for massimo copenhagen. This collection illuminates the subtle yet sublime patterns that enrich our daily surroundings. Designed to captivate both as a standalone piece and in harmony with the rest of the interior, the Surface Collection emerges with architectural finesse, rendered in monochromatic tones that echo the natural world.

Available In:



DROPS - FOREST GREEN    DROPS - ROCKY GREY    DROPS - SMOKED CARMEL    VEIN - FOREST GREEN    VEIN - ROCKY GREY    VEIN - SMOKED CARMEL

	170x240 cm 5,58x7,87 ft	200x300 cm 6,56x9,84 ft	250x350 cm 8,20x11,48 ft	-	-	-	-	Special sizes/m <sup>2</sup> 10,76 ft <sup>2</sup>
DROPS - FOREST GREEN	1,097	1,613	2,352	-	-	-	-	336
DROPS - ROCKY GREY	1,097	1,613	2,352	-	-	-	-	336
DROPS - SMOKED CARMEL	1,097	1,613	2,352	-	-	-	-	336
VEIN - FOREST GREEN	1,097	1,613	2,352	-	-	-	-	336
VEIN - ROCKY GREY	1,097	1,613	2,352	-	-	-	-	336
VEIN - SMOKED CARMEL	1,097	1,613	2,352	-	-	-	-	336



GROUNDWORK Studio is a Copenhagen-based design office founded by Morten Bo Jensen, former in-house Chief Designer with 16 consecutive years for a leading Danish design brand. GROUNDWORK Studio is deeply passionate about the design of refined products with a strong DNA and an ability to stand the test of time. Their design-awarded work covers leadership in a wide range of product categories from furniture, lighting and accessories to entire kitchen and bathroom systems - and everything in between.

All rugs are handmade - size deviation on +/- 3% must be accepted.		Prices marked with grey = special sizes with 16-18 week delivery time	
Certifications:	Colorfastness to light: ISO 105-B02-grade 5	Flammability: 16CFR 1630 (FF-1-70)	Production: SA 8000
	STANDARD 100 by OEKO-TEX®		

## GROUND Collection by Norm Architects

**HANDTUFTED**

**100% NEW ZEALAND WOOL**

Pile height: 7-9 mm  
Weight: 4 kg/m<sup>2</sup>

The colors and textures within the collection are inspired by earthy tones and subtle hues that reflect the diverse landscapes of our living environment. By incorporating these elements into our designs, we aim to create a space that feels inviting and harmonious - where the presence of nature is palpable, promoting a sense of connection and well-being.

Available In:



	-	170x240 cm 5,58x7,87 ft	200x300 cm 6,56x9,84 ft	250x250 cm 8,20x8,20 ft	250x350 cm 8,20x11,48 ft	300x400 cm 9,84x13,12 ft	-	-	Special sizes/m <sup>2</sup> 10,76 ft <sup>2</sup>
DUNE	-	887	1,317	1,384	1,922	2,634	-	-	285
SAND	-	887	1,317	1,384	1,922	2,634	-	-	285
WARM OAK	-	887	1,317	1,384	1,922	2,634	-	-	285
WALNUT	-	887	1,317	1,384	1,922	2,634	-	-	285
BARK	-	887	1,317	1,384	1,922	2,634	-	-	285
SOIL	-	887	1,317	1,384	1,922	2,634	-	-	285



Drawing on 15 years of international experience within residential, hospitality, industrial design and creative direction, Norm Architects works to re-sensualize the built environment. Founded in 2008, Norm Architects is a Copenhagen-based practice working with design to enrich the human experience. As multidisciplinary architects and designers, we consider our work as a facilitation of well-being, as a distillation of aesthetics that resonate with the unique person and place, and as a system that supports universal human needs.

All rugs are handmade - size deviation on +/- 3% must be accepted.		Prices marked with grey = special sizes with 16-18 week delivery time	
Certifications:	Colorfastness to light: ISO 105-B02-grade 5	Flammability: 16CFR 1630 (FF-1-70)	Production: SA 8000
	STANDARD 100 by OEKO-TEX®		

## STRUCTURES by OEO Studio

HANDTUFTED

50% NEW ZEALAND WOOL / 50% BAMBOO

Pile height: 15-18 mm  
Weight: 4,50 kg/m<sup>2</sup>

The series of luxurious carpets by OEO Studio for massimo has a distinctly graphic character. The image – or signifier – is after all the particular legacy of man's presence on earth through millennia. Where two colours meet, their contours are hand cut. This procedure helps each motif to stand out. Whilst the process is time-consuming, the result is certainly something to treasure.

Available In:



FRAGMENT 1    FRAGMENT 2    FRAGMENT 2 WITH BORDER    FRAGMENT 3    FRAGMENT 4

	-	170x240 cm 5,58x7,87 ft	200x300 cm 6,56x9,84 ft	250x350 cm 8,20x11,48 ft	300x400 cm 9,84x13,12 ft	-	-	-	Special sizes/m <sup>2</sup> 10,76 ft <sup>2</sup>
FRAGMENT 1	-	995	1,414	2,634	3,613	-	-	-	301
FRAGMENT 2	-	995	1,414	2,064	3,613	-	-	-	301
FRAGMENT 2 WITH BORDER	-	995	1,806	2,634	3,613	-	-	-	301
FRAGMENT 3	-	995	1,414	2,634	3,613	-	-	-	301
FRAGMENT 4	-	995	1,414	2,064	3,613	-	-	-	301

## STRUCTURES 2.0 by OEO Studio

HANDTUFTED

100% NEW ZEALAND WOOL

Pile height: 15-18 mm  
Weight: 4,50 kg/m<sup>2</sup>

The new subdued color scheme of the now iconic Fragments collection by OEO Studio. This new palette allows the design to take on a different role, becoming more sophisticated and mystic in its overall aesthetic. The inspiration behind the Structures collection is "traces of man" with a strong cross-cultural approach. The pattern design of the collection plays with references to past civilizations, drawing inspiration from old Chinese stamps as well as rural art and folklore. Handtufted from STANDARD 100 by OEKO-TEX certified New Zealand Wool, with an additional OEKO-TEX cotton layer on the backside, making it suitable for any type of floor, for both residential and commercial spaces.

Available In:



FRAGMENT 2 - ARCTIC GREEN    FRAGMENT 2 - PALE ROSE    FRAGMENT 2 - VULCANO DUST

	-	170x240 cm 5,58x7,87 ft	200x300 cm 6,56x9,84 ft	250x350 cm 8,20x11,48 ft	300x400 cm 9,84x13,12 ft	-	-	-	Special sizes/m <sup>2</sup> 10,76 ft <sup>2</sup>
FRAGMENT 2 - ARCTIC GREEN	-	995	1,414	2,064	3,613	-	-	-	301
FRAGMENT 2 - PALE ROSE	-	995	1,414	2,064	3,613	-	-	-	301
FRAGMENT 2 - VULCANO DUST	-	995	1,414	2,064	3,613	-	-	-	301



Thomas Lykke and Anne-Marie Buemann, founders of OEO Studio, have established a distinct aesthetic which bridges the difference between individual detail and overall décor. Their work can be seen in individual homes, hotels, furniture production and other applications. Their philosophy allows for each project to develop its own 'soul'. This is a factor of both the natural materials they use and the vision a customer has in mind – as is the case with massimo's 'Fragments' series. Colours and materials are often deployed in unexpected ways – each time taking inspiration from their potential to provide a convivial backdrop for human interaction

All rugs are handmade - size deviation on +/- 3% must be accepted.		Prices marked with grey = special sizes with 16-18 week delivery time	
Certifications:	Colorfastness to light: ISO 105-B02-grade 5	Flammability: 16CFR 1630 (FF-1-70)	Production: SA 8000
	*STANDARD 100 by OEKO-TEX®	*Applies to Fragments 2.0 Collection only	

## HEMP by Tanja Kirst

HANDWOVEN

100% ITALIAN HEMP

Pile height: N/A  
Weight: 3,00 kg/m<sup>2</sup>

The collection by Tanja Kirst emerged from the artist's master project "Re: Thinking Hemp" that aims to produce raw textile materials from sustainably cultivated hemp. Handwoven with Italian hemp yarn, each thread consists of 50 thin threads spun together and dyed in bio colour. The colourful palette of the collection is a tribute to nature, while the unique pattern with flat weave and colour and weft effect, creates a different experience every time you enter the room. The rugs are bio-dyed, which gives them their natural colour hues that are woven in optical repetitions and interact depending on the light.

Available In:



	-	-	200x300 cm 6,56x9,84 ft	250x350 cm 8,20x11,48 ft	-	-	-	-	Special sizes/m <sup>2</sup> 10,76 ft <sup>2</sup>
MULTI	-	-	1,827	2,290	-	-	-	-	-
RED/YELLOW	-	-	-	2,290	-	-	-	-	-
NOUGAT ROSE	-	-	1,827	2,290	-	-	-	-	-
GREY	-	-	1,827	2,290	-	-	-	-	-

Rug Underlay Included



Tanja Kirst's work is characterized by reflection on thoughts and details that you don't immediately recognize. This includes subtle colour transition and gradation into shades. Tanja Kirst works with hemp as a sustainable alternative in textile design, rethinking a well-known material in a space between design and craftsmanship, she gives this eco-friendly material a whole new appeal. With interaction and observation, all the functions and details can be experienced over time. This experimental process and way of designing is developed with an intention to add more value to the textile – and to give a poetic approach and longevity to the product.

## AFFINITY by Vera&Kyte

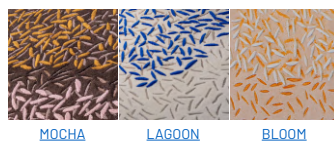
HANDTUFTED

100% NEW ZEALAND WOOL

Pile height:  
8-22mm  
Weight: 5,00 kg/m<sup>2</sup>

The design bridges the gap between the organic and geometric. The soft scattered sprinkles are all neatly framed within a simplistic geometric motif within a solid color base. The different pile heights and hand cut shapes create an impression of layers. By using the finest New Zealand Wool, we are able to create a finished rug with an exceptional level of sturdiness, protecting the rug against wear and tear and pressure marks, without sacrificing on the luxurious look and feel.

Available In:



	-	170x240 cm 5,58x7,87 ft	200x300 cm 6,56x9,84 ft	-	-	-	-	-	Special sizes/m <sup>2</sup> 10,76 ft <sup>2</sup>
MOCHA	-	1,070	1,516	-	-	-	-	-	328
LAGOON	-	1,070	1,516	-	-	-	-	-	328
BLOOM	-	1,070	1,516	-	-	-	-	-	328



A Norwegian design duo, Vera & Kyte consists of Vera Kleppe and Åshild Kyte. Together they work within the fields of furniture, products and interior architecture. Always seeking new impressions, eager to discover the triggers for the next idea. This curious approach leads them to constantly explore new materials and aesthetics. Applying an analytical approach they seek to transform their curiosity into products that engage.

All rugs are handmade - size deviation on +/- 3% must be accepted.			Prices marked with grey = special sizes with 16-18 week delivery time		
Certifications:	Colorfastness to light: ISO 105-B02-grade 5	Flammability: 16CFR 1630 (FF-1-70)	Production: SA 8000		
	*STANDARD 100 by OEKO-TEX®	* Applies to Affinity Collection only			

## RYA

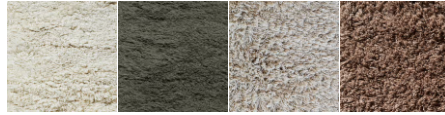
HANDWOVEN

100% NEW ZEALAND WOOL

Pile height: 45 mm  
Weight: 4,2 kg/m<sup>2</sup>

The Rya rug is made of 100% New Zealand wool, which adds natural beauty and ensures easy maintenance. The natural properties of New Zealand wool makes it non-allergenic and fire-resistant which helps to create a safe and healthy indoor environment, and also it has a natural ability to resist dirt.

Available In:



CREAM CHARCOAL SOFT BEIGE NOUGAT BROWN

	140x200 cm 4,59x6,56 ft	170x240 cm 5,58x7,87 ft	200x300 cm 6,56x9,84 ft	-	-	-	-	-	Special sizes/m <sup>2</sup> 10,76 ft <sup>2</sup>
CREAM	666	973	1,435	-	-	-	-	-	301
CHARCOAL	666	973	1,435	-	-	-	-	-	301
SOFT BEIGE	666	973	1,435	-	-	-	-	-	301
NOUGAT BROWN	843	973	1,806	-	-	-	-	-	301

## BUBBLES

HANDWOVEN

100% FELTED NEW ZEALAND WOOL

Pile height: 15-18 mm  
Weight: 5,3 kg/m<sup>2</sup>

The soft graphic expression of this rug adds a cool nordic ambience to your home. The felted wool is easy to maintain - the natural properties of New Zealand wool makes it non-allergenic and fire-resistant which helps to create a safe and healthy indoor environment

Available In:



CREAM

	140x200 cm 4,59x6,56 ft	170x240 cm 5,58x7,87 ft	200x300 cm 6,56x9,84 ft	-	-	-	-	-	Special sizes/m <sup>2</sup> 10,76 ft <sup>2</sup>
CREAM	1,069	1,231	1,806	-	-	-	-	-	382

All rugs are handmade - size deviation on +/- 3% must be accepted.				Prices marked with grey = special sizes with 16-18 week delivery time			
Certifications:	Colorfastness to light: ISO 105-B02-grade 5	Flammability: 16CFR 1630 (FF-1-70)	Production: SA 8000				

## BELIZE

**WOVEN**

**100% SISAL**

Pile height: N/A  
Weight: 3,5-3,7 kg/m<sup>2</sup>

Belize is made in a simple design, yet with a lot of character. Natural rug in 100% Sisal with rubber backing. Sisal is sustainable, natural and biodegradable and has a strong durability.

**With anti-slip rubber backing.**

Available In:



	80x150 cm 2,62x4,92 ft	90x200 cm 2,95x6,56 ft	90x300 2,95 x9,84 ft	160x240 cm 5,25x7,87 ft	240x320 cm 7,87x10,5 ft	300x400 cm 9,84x13,12 ft	dia 200 cm 6,56 ft	dia 245 cm 8,20 ft	Special sizes/m <sup>2</sup> 10,76 ft <sup>2</sup>
TAUPE	188	274	414	575	1,150	1,801	602	935	-
NATURAL	-	274	-	575	1,150	-	602	935	-

## SUMACE

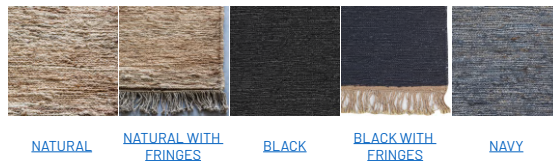
**HANDKNOTTED**

**100% HEMP/JUTE**

Pile height: N/A  
Weight: 3,0-3,2 kg/m<sup>2</sup>

Strong, sustainable and timelessly stylish. Sumace rugs are handknotted in 100% Hemp, which gives a sophisticated rustic expression and appeals to the basics in life. Hemp has a high abrasion resistance and its softness increases over time. It is sustainable, natural and biodegradable material that has a strong durability.

Available In:



	-	170x240 cm 5,58x7,87 ft	200x300 cm 6,56x9,84 ft	250x300 cm 8,20x9,84 ft	-	-	-	-	Special sizes/m <sup>2</sup> 10,76 ft <sup>2</sup>
Natural - with fringes	-	952	1,392	1,763	-	-	-	-	301
Natural - without fringes	-	952	1,392	1,763	-	-	-	-	301
Black - with fringes	-	952	1,392	1,763	-	-	-	-	301
Black - without fringes	-	952	1,392	1,763	-	-	-	-	301
Navy - without fringes	-	952	1,392	1,763	-	-	-	-	301

Rug Underlay Included

All rugs are handmade - size deviation on +/- 3% must be accepted.		Prices marked with grey = special sizes with 16-18 week delivery time	
Certifications:	Colorfastness to light: ISO 105-B02-grade 5	Flammability: 16CFR 1630 (FF-1-70)	Production: SA 8000

# UNIKA RUGS

## VINTAGE

HANDKNOTTED

100% WOOL

Pile height: N/A  
Weight: 3,8 kg/m2

Unique rugs made of semi-old Anatolian handknotted rugs which are transferred into beautiful patchwork rugs by massimo. Choose your colour combination and we guarantee that you will get the most beautiful unique handmade rug with a long lasting value which is easy to maintain.

Available In:



[NATURAL LIGHT](#)

[NATURAL STRONG](#)

[GREY](#)

	80x250 cm 2,62x8,20 ft	140x200 cm 4,59x6,56 ft	170x240 cm 5,58x7,87 ft	200x300 cm 6,56x9,84 ft	250x350 cm 8,20x11,48 ft	300x400 cm 9,84x13,12 ft	dia 250 cm 8,20 ft	dia 300 cm 9,84 ft	Special sizes/m2 10,76 ft2
NATURAL LIGHT	591	849	1,210	1,774	2,591	3,548	1,849	2,661	371
NATURAL STRONG	591	1,039	1,210	1,774	3,246	3,548	2,319	2,661	371
GREY	591	1,039	1,514	2,226	3,246	4,452	2,319	2,661	371

## TRASH

HANDKNOTTED

100% WOOL

Pile height: N/A  
Weight: 3,8 kg/m2

Unique rugs transformed from traditional centuries old handknotted rugs. We wash them, some we use as they are, some we trash, some we color and some we bleach. We strive to obtain that expression of decadent decay which adds so much class to all kind of environments. The rugs are easy to maintain and the more you use them the more character they get.

	-	170x240 cm 5,58x7,87 ft	200x300 cm 6,56x9,84 ft	-	250x350 cm 8,20x11,48 ft	300x400 cm 9,84x13,12 ft	-	-	Special sizes/m2 10,76 ft2
All Colors	-	1,141	1,677	-	2,446	3,355	-	-	280

Custom sizes available In stock - please ask for stock list

## NATURAL KELIM

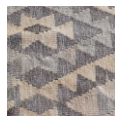
HANDWOVEN

100% NEW ZEALAND WOOL

Pile height: N/A  
Weight: 2,5 kg/m2

Each rug is unique and the combination of traditional weaving methods and patterns together with the natural colored wool provides unique rugs with high integrity. It has a natural ability to resist dirt and is sustainable, natural and biodegradable.

Available In:



[LIGHT GREY](#)

	-	170x240 cm 5,58x7,87 ft	200x300 cm 6,56x9,84 ft	-	-	-	-	-	Special sizes/m2 10,76 ft2
LIGHT GREY	-	790	1,167	-	-	-	-	-	253

Rug Underlay Included

## RUG UNDERLAY

When choosing a perfect rug, it is important to not forget the underlay. Rug underlay will improve how your rug feels underfoot, but it will also help maintain your rug as well as provide extra protection against moisture. Underlay carpets are also useful as noise protectors as they minimize the sounds such as footsteps, voices or moving furniture.

	80x200 cm 2,62x6,56 ft	90x250 cm 2,11x8,20 ft	140x200 cm 4,59x6,56 ft	170x240 cm 5,58x7,87 ft	200x300 cm 6,56x9,84 ft	250x300 cm 8,20x9,84 ft	250x350 cm 8,20x11,48 ft	300x400 cm 9,84x13,12 ft	Special sizes/m2 10,76 ft2
RUG UNDERLAY	40	56	62	83	126	185	210	253	25

## TREATMENTS

TREATMENTS	Price M2
MOTH PROOFING	16
FIRE RETERDANT	32
SCOTCH GUARD	22

## SAMPLES

INDIVIDUAL SAMPLES	NET Price/Piece
15X15 CM	5
40X60 CM	39

COLLECTION SET	NET Price/Set
HANGER FOR SAMPLES	336
15x15 CM	108
40x60 CM	578

## SHIPPING

	WITHIN EUROPE	REST OF THE WORLD
	NET EUR	NET EUR
1-190 cm	45	150
190-250 cm	70	175
250-300 cm	130	260
300+ cm	TBC	TBC